



Welcome!

Improvements on Main Street (Route 113)
Dunstable, MA
Project No. 608603

Design Public Hearing

June 17, 2017

6:30 PM

Dunstable Town Hall, Grand Hall (Main Floor)

Introductions / Hearing Agenda

◆ Project Team

- MassDOT
 - Kim Sloan - Sr. Project Manager
 - Robin Giando - Right-of-Way
- BSC Group, Inc.
 - Eric Carlson, PE - Sr. Project Manager
 - Kellan Lewis, PE - Project Engineer

◆ Hearing Agenda

- Opening Remarks
- Design Presentation
- Q&A Session
- Closing Remarks

Presentation Outline

- ◆ Project History
- ◆ Project Purpose & Goals
- ◆ Proposed Scope of Work
- ◆ Project Area/Limits
- ◆ Existing Conditions & Key Issues
- ◆ Proposed Improvements & Solutions
- ◆ Project Right-of-Way Requirements
- ◆ Construction Phase Expectations
- ◆ Next Steps/Project Schedule

Project History

- ◆ Project Initiation - May 2015
- ◆ Conceptual Design/Public Outreach - May 2015 thru April 2016
 - Series of 6 Planning “Charrettes”
 - Project Purpose, Need, Goals and Objective Established
- ◆ MassDOT Project Review Committee - May 2016 thru August 2016
 - Determined Eligible for Federal Aid highway funding
 - Programmed for TIP Year: FFY 2021
- ◆ Preliminary Design - August 2016 thru April 2019
 - Prelim. Highway Design Plans
 - Prelim. ROW Plans
 - Utility Coordination
 - Design Exception Process
 - MassDOT Review/Approval

Project Purpose & Goals

“To improve safety and accessibility for all of the roadway corridor’s users while protecting, enhancing and reinforcing the corridor’s existing village character, rural landscape, and historic features.”

- ◆ Improve Vehicular Safety and Travel
- ◆ Improve Bicycle Safety and Accommodation
- ◆ Improve Pedestrian Safety and Accessibility
- ◆ Improve Roadway Infrastructure
- ◆ Mitigate/Enhance Village Character

Project Area / Limits



Proposed Scope of Work

- ◆ Pavement Widening and Reconstruction
- ◆ Cement Concrete Sidewalk Construction
- ◆ ADA-Compliant Pedestrian Ramp Construction
- ◆ Granite Curbing/HMA Berm Installations
- ◆ Highway Culvert & Drainage System Improvements
- ◆ Highway Retaining Wall Reconstruction
- ◆ Highway Guard System Installations
- ◆ Pavement Marking & Signage Installations
- ◆ Landscape & Streetscape Amenities

Existing Conditions & Key Issues



Town Center Area

Existing Conditions & Key Issues



- ◆ Substandard Pedestrian Crossings on Main Street
 - Non-Compliant Crosswalks
 - Poorly Located
 - No Ped. Ramps or Sidewalks
 - No Advance Signage

Town Center Area

Existing Conditions & Key Issues



- ◆ Awkward/Confusing Turning Movements



- ◆ Poorly Marked & Signed
- ◆ No Ped. Accommodations

High Street Intersection

Existing Conditions & Key Issues



- ◆ Main Access to Town Hall
- ◆ No Ped. Accommodations



- ◆ Narrow Pavement Width

Common Street Intersection

Existing Conditions & Key Issues



- ◆ Poorly Drained
- ◆ Narrow Shoulders

- ◆ No Ped. Accommodations
- ◆ No Bike Accommodations

Main Street

Existing Conditions & Key Issues



- ◆ Poorly Drained
- ◆ Failing Pavements
- ◆ Narrow Shoulders

- ◆ No Ped. Accommodations
- ◆ No Bike Accommodations

Main Street

Existing Conditions & Key Issues



- ◆ Poorly Drained
- ◆ Failing Pavements
- ◆ Narrow Shoulders

- ◆ No Ped. Accommodations
- ◆ No Bike Accommodations

Main Street

Existing Conditions & Key Issues



◆ Upstream/Inlet View



◆ Downstream/Outlet View

Highway Culvert

Existing Conditions & Key Issues



- ◆ Stone Slab Masonry
- ◆ Kinked Alignment

- ◆ Collapsing Inlet
- ◆ Structurally Deficient and Failing

Highway Culvert

Existing Conditions & Key Issues



- ◆ Stacked Stone Masonry
- ◆ Retains Adjacent Roadway

- ◆ Structurally Deficient and Failing

Highway Retaining Wall

Existing Conditions & Key Issues



- ◆ Substandard Intersection Sight Distance to the East



- ◆ Restricted by Existing Cemetery Retaining Wall

Westford Street Intersection

Existing Conditions & Key Issues



Historic Central Cemetery

Existing Conditions & Key Issues



- ◆ Cemented Stone Masonry Walls - Upper and Lower



- ◆ Tombs Accessed through Grass Slope

Historic Central Cemetery

Existing Conditions & Key Issues



- ◆ No Separation/Buffer from Travel Way



- ◆ Progressive Damage from Heavy Trucking Vibrations and Snow Plow Impacts

Historic Central Cemetery

Existing Conditions & Key Issues



- ◆ No Separation/Buffer from Travel Way



- ◆ Sight Distance Impeded by Utility Pole

Historic Kendall Tavern

Summary - Existing Conditions & Key Issues

- ◆ Substandard Pedestrian & Bicycle Accommodation
- ◆ Intersection Safety Concerns
- ◆ Deteriorating Roadway Infrastructure
 - Roadway Pavements
 - Drainage Systems
 - Highway Guard Rail Systems
 - Pavement Markings & Signage
- ◆ Structurally Deficient Highway Culvert
- ◆ Structurally Deficient Highway Retaining Wall
- ◆ Historic Central Cemetery and Kendall Tavern Encroachment and Safety Concerns

Proposed Improvements & Solutions



Town Center Area

Proposed Improvements & Solutions

◆ Intersection Improvements

- Safety
- Approach
- Definition



Town Center Area

Proposed Improvements & Solutions



- ◆ Uniform 30' Travel Way
 - 11' Lanes
 - 4' Shoulders - Bike Accommodation
 - 5' Sidewalk - Ped. Accommodation

Main Street

Proposed Improvements & Solutions

◆ Roadway Infrastructure

- Pavement Reconstruction
- Culvert Replacement
- Retaining Wall Reconstruction
- Drainage System Improvements

◆ Utility Infrastructure

- Water Main Replacement
- Gas Main Replacement
- Utility Pole Relocations



Main Street

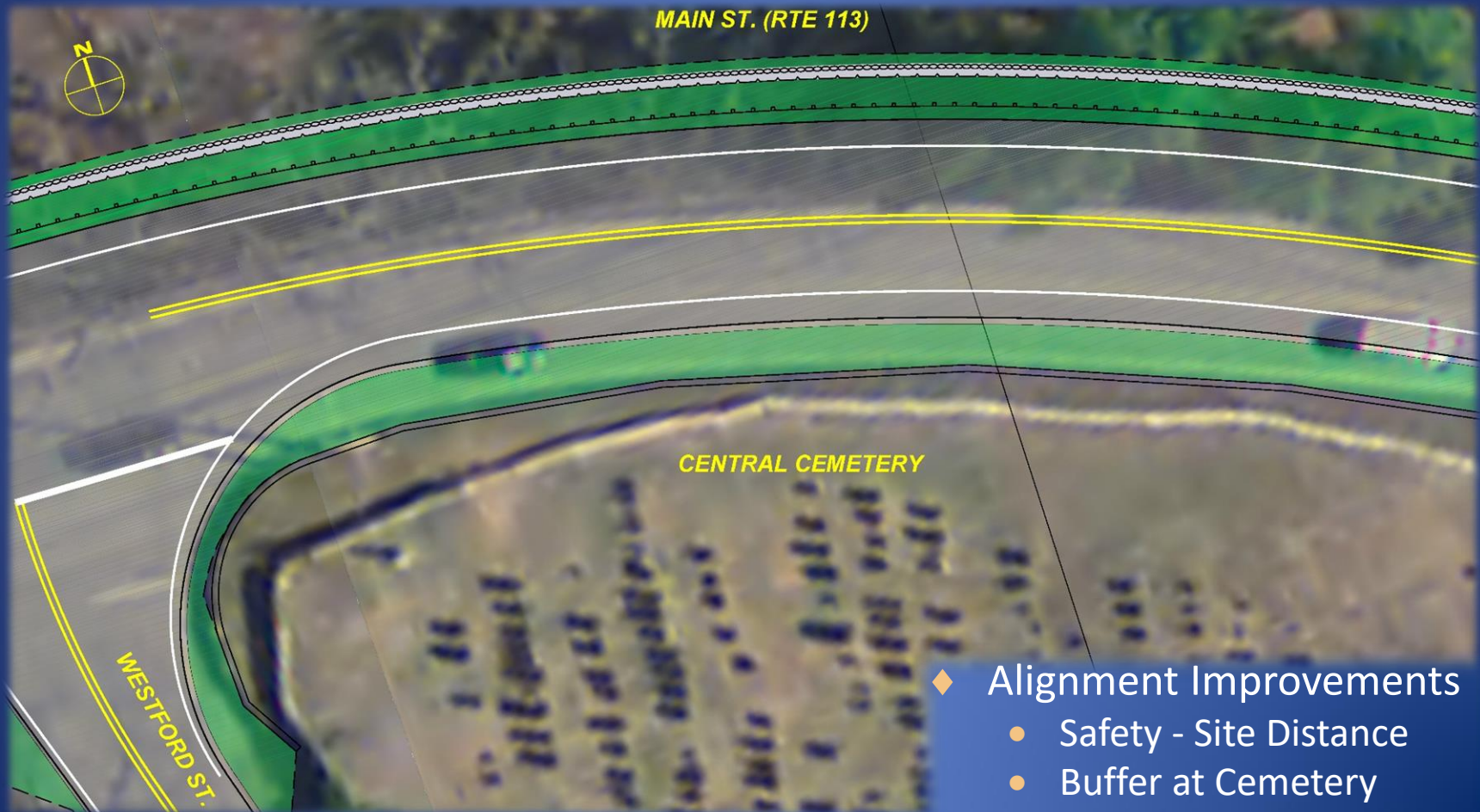
Proposed Improvements & Solutions



- ◆ Intersection Improvements
 - Safety - Site Distance
 - Approach
 - Definition

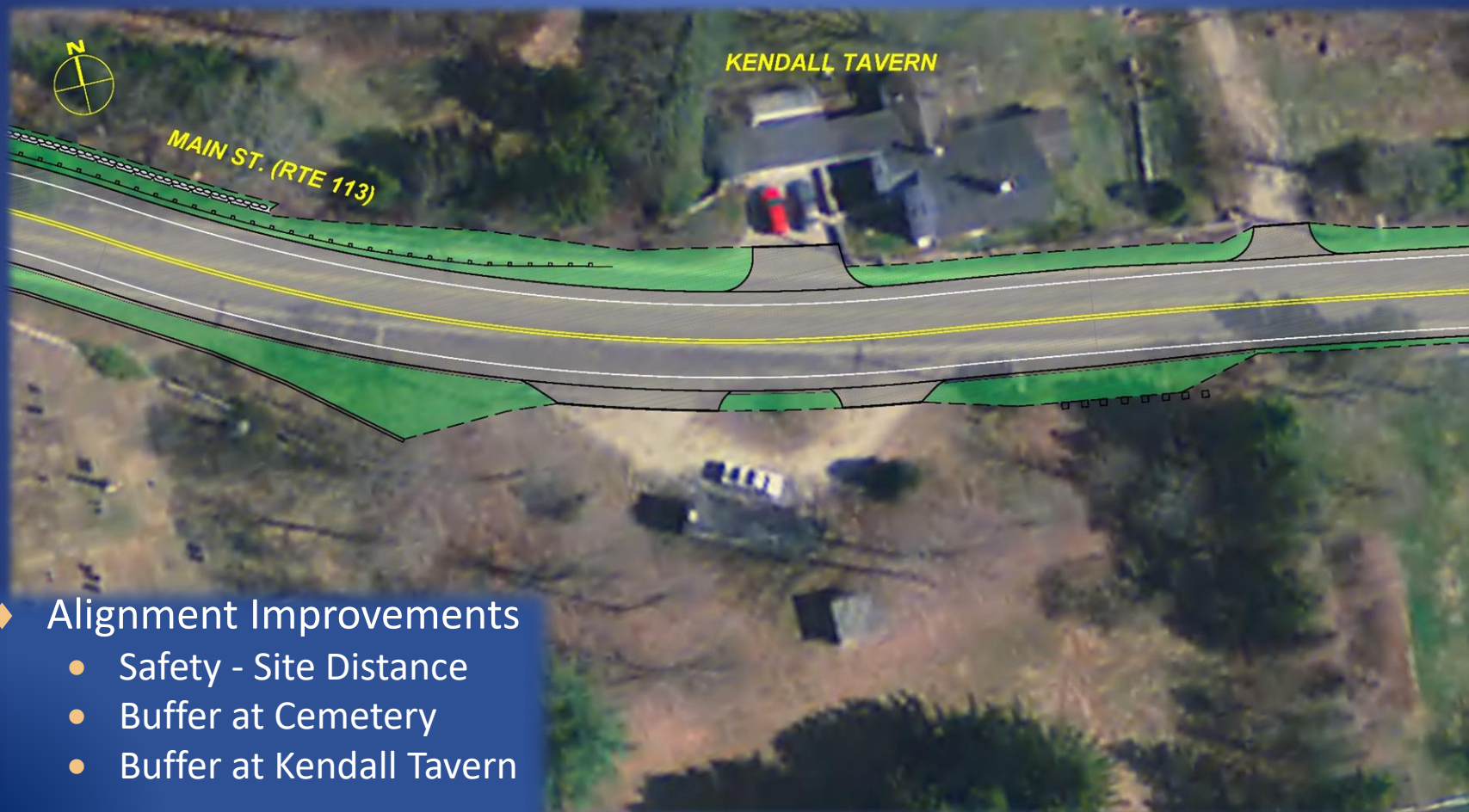
Main Street

Proposed Improvements & Solutions



Main Street

Proposed Improvements & Solutions



- ◆ Alignment Improvements
 - Safety - Site Distance
 - Buffer at Cemetery
 - Buffer at Kendall Tavern

Main Street

Proposed Improvements & Solutions

◆ Alignment Improvements

- Safety - Site Distance
- Buffer at Kendall Tavern



Main Street

Proposed Improvements & Solutions



- ◆ Limit of Work
 - Transition to Meet MassDOT Project No. 606042 (Completed 2013)

Main Street

Project Right-of-Way Requirements

- ◆ A Secure Right-of-Way
 - Temporary Construction Easements
 - Permanent Drainage/Utility Easements
 - Permanent Fee Acquisitions
- ◆ Right-of-Way Certificate

Construction Phase Expectations

- ◆ Phased Work Zone Construction
- ◆ Two-Way Thru Traffic Maintained at All Times
- ◆ Abutter Access Maintained at All Times
- ◆ Intermittent Restrictions for Certain Work
- ◆ Construction Duration ~ 2 Full Construction Seasons

Next Steps/Project Schedule

- ◆ Address Comments from Tonight's Hearing
- ◆ Prepare Final Design Documents
 - Final Design Plans/Specifications/Construction Cost Estimates
 - Final Right-of-Way Plans
- ◆ Obtain All Required Permits & Approvals
- ◆ Secure Right-of-Way Certificate
- ◆ Advertise Construction Contract ~ October 2020
- ◆ Issue Construction Contract Notice to Proceed ~ April 2021



Thank You!

and

Q&A

Improvements on Main Street (Route 113)

Dunstable, MA

Project No. 608603

Design Public Hearing

June 17, 2019

6:30 PM

Dunstable Town Hall, Grand Hall (Main Floor)